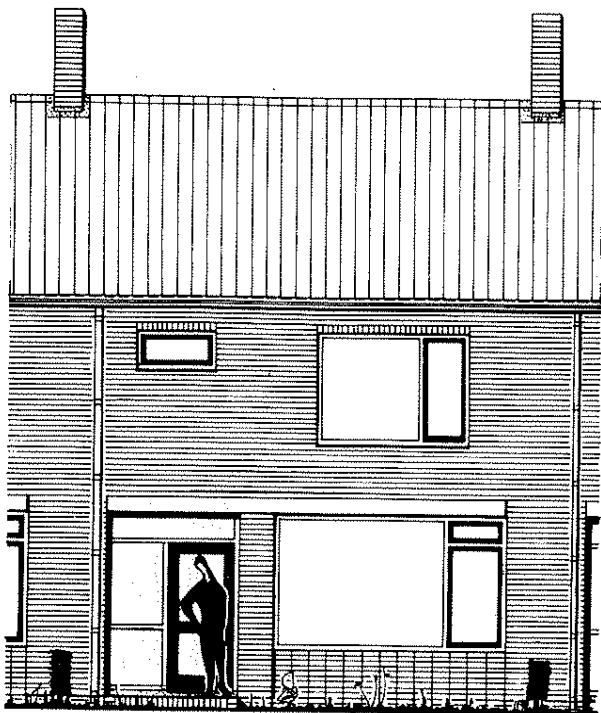
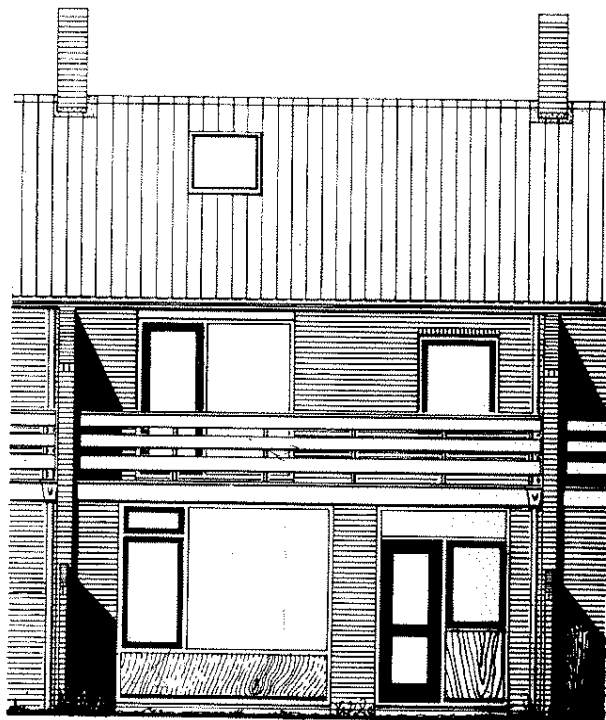


*Deze bouw wordt uitgevoerd door bouwbedrijf  
fa. J.J. Ras te Castricum*

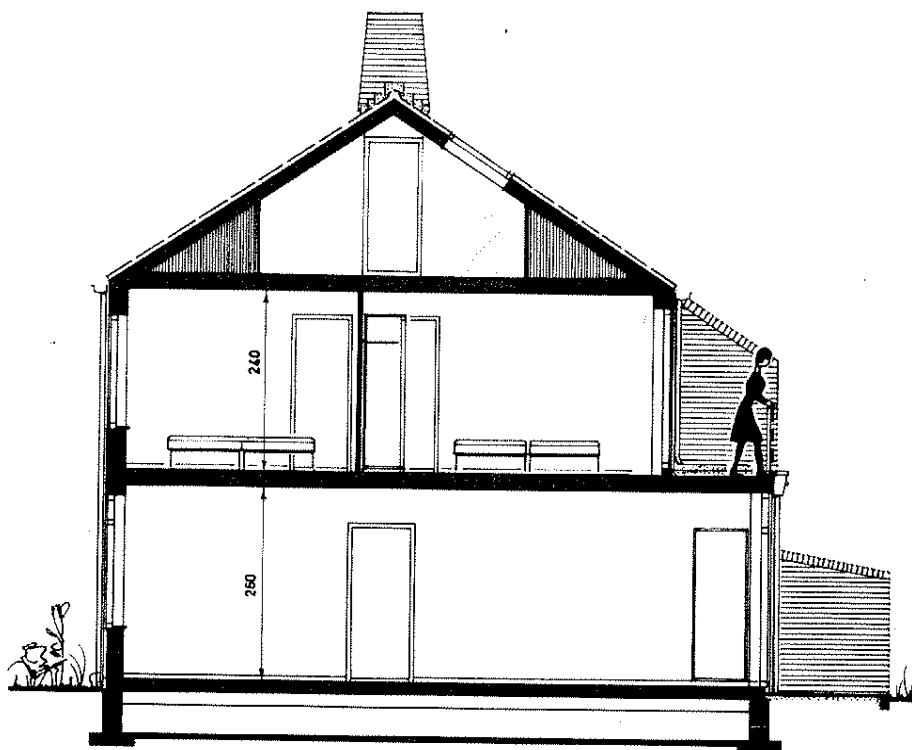
*De woningen zijn ontworpen door Architect  
W. Keesom te Alphen a.d. Aa.*



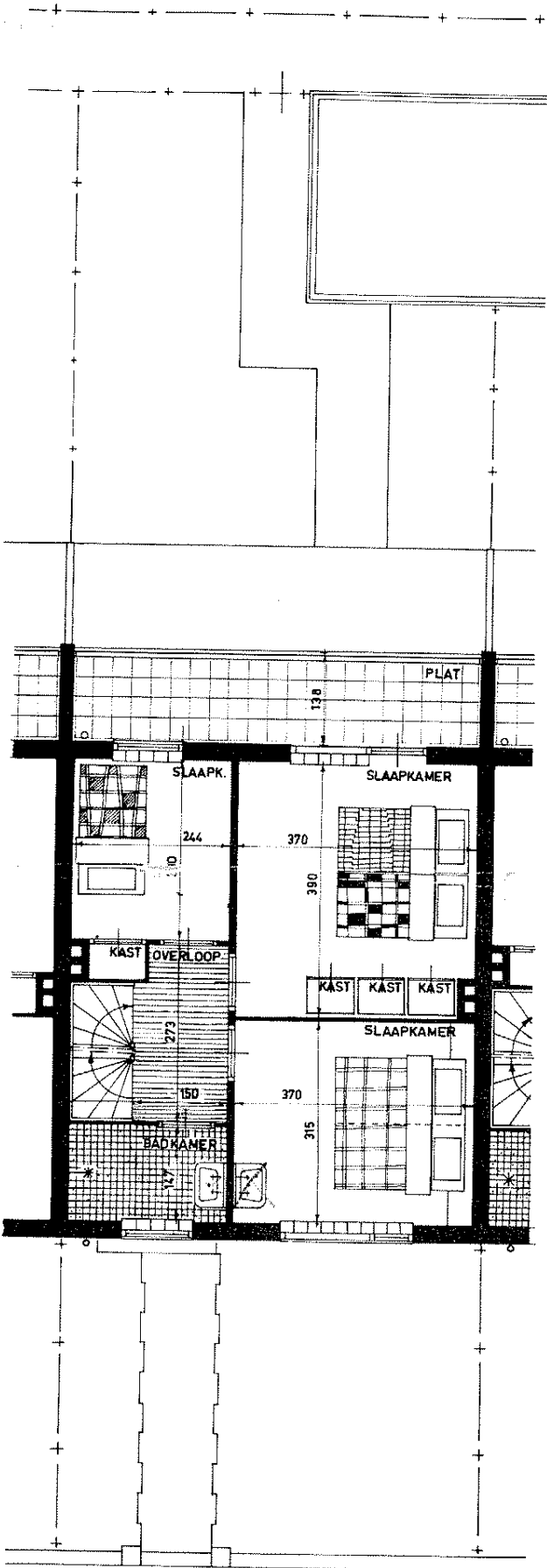
VOORGEVEL



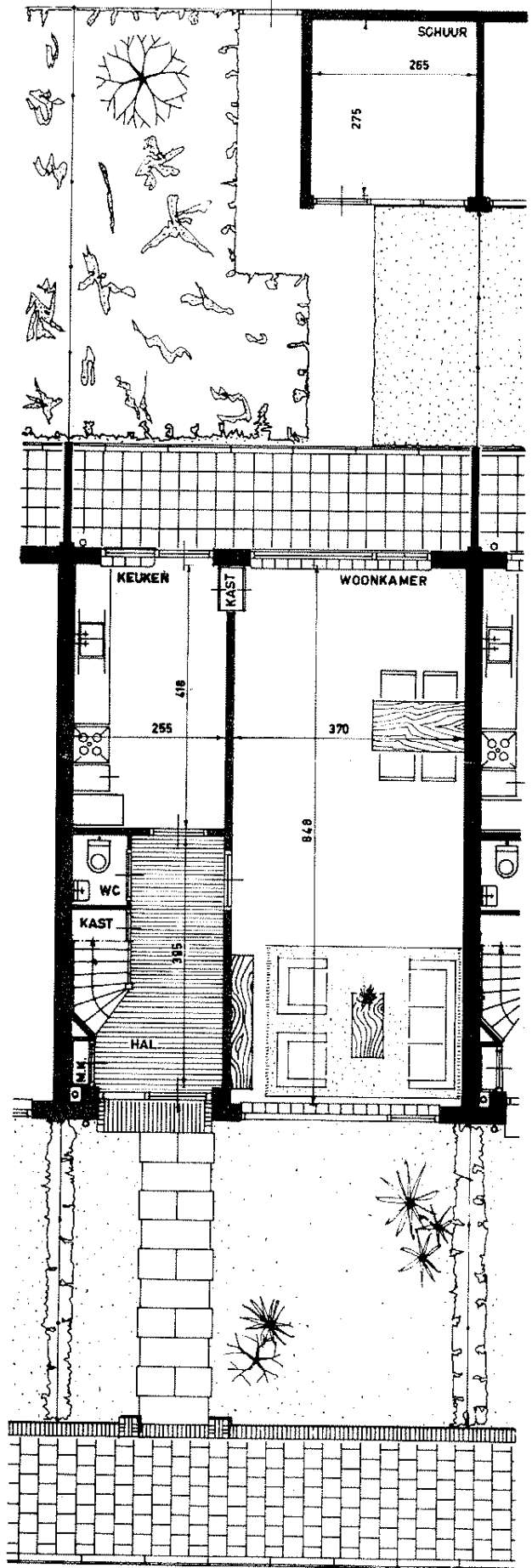
ACHTERGEVEL



DOORSNEDE WONING



VERDIEPING



BEGANEGROND