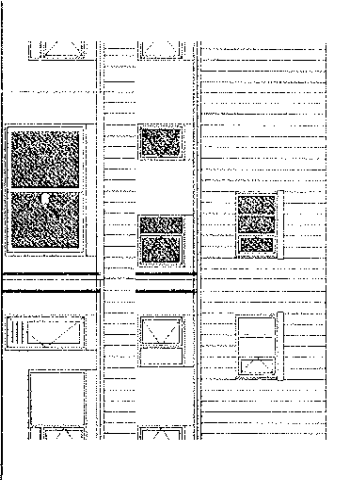
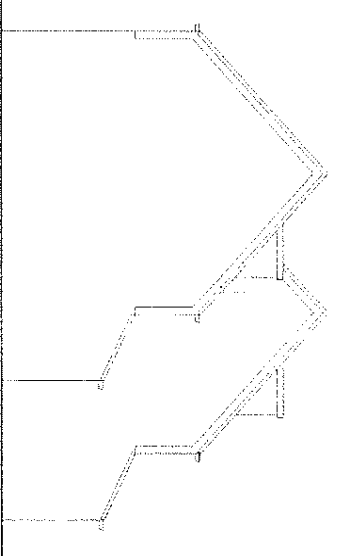


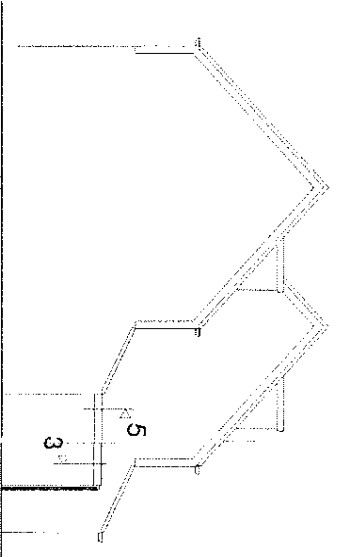
Bestaande achtergevel



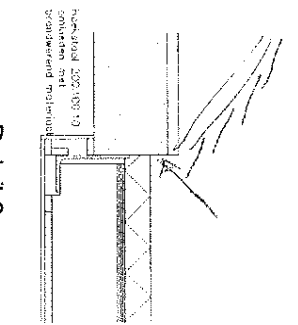
Nieuwe achtergevel



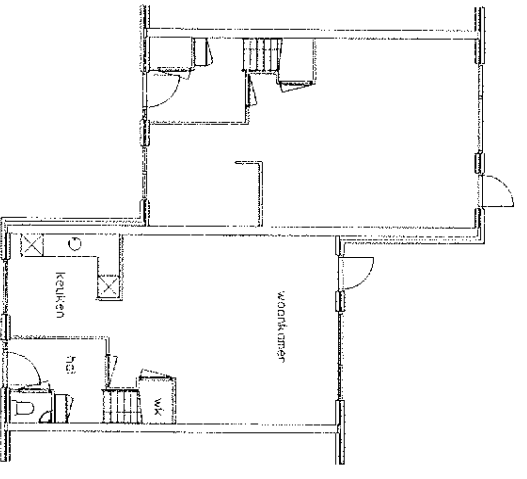
Bestaande zijaanzicht



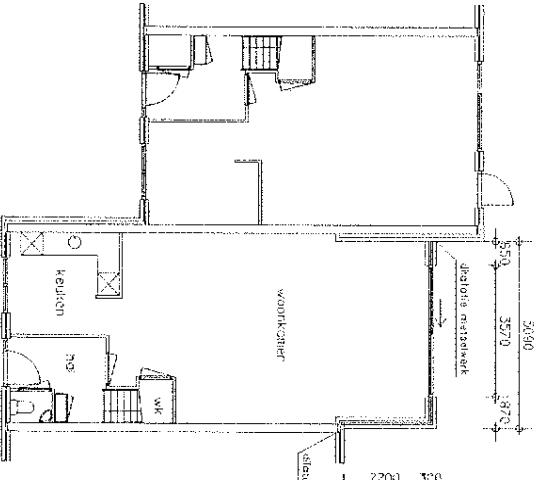
Nieuwe zijaanzicht



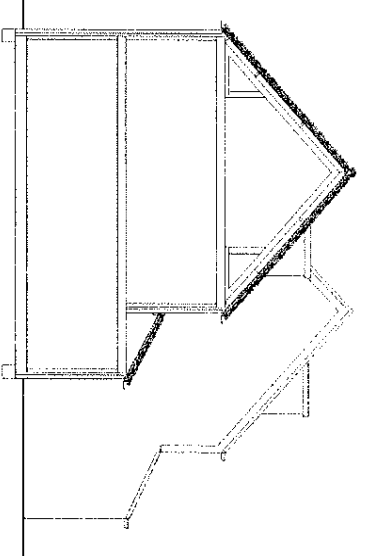
Detail 6



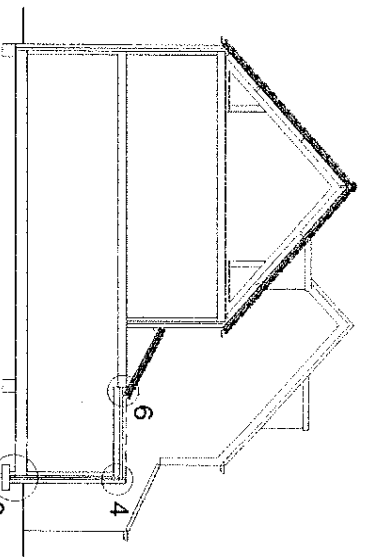
Bestaande plattegrond



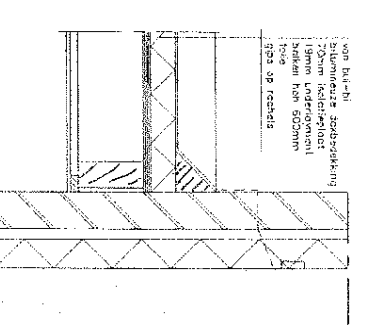
Nieuwe plattegrond



Bestaande doorsnede

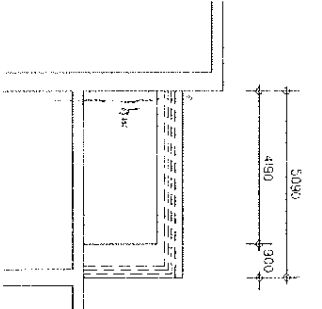


Nieuwe doorsnede

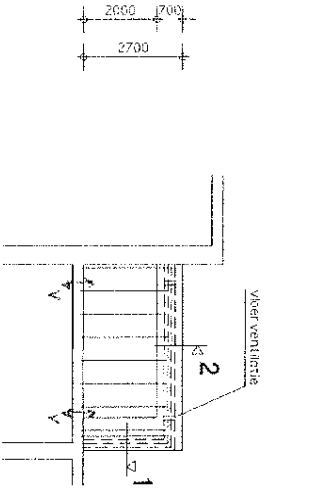


Detail 5

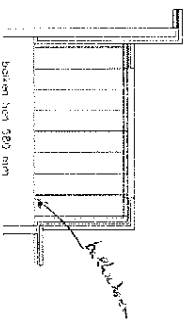
de balken verankeren in bestaande fundering met chemisch spuitanker UPR4-1 en per balk 2x4,5 10 staven per 50xk 100 mm in te boren en 400 mm secundaire 12mm, staal lengte 5000mm



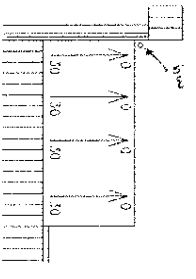
Fundering



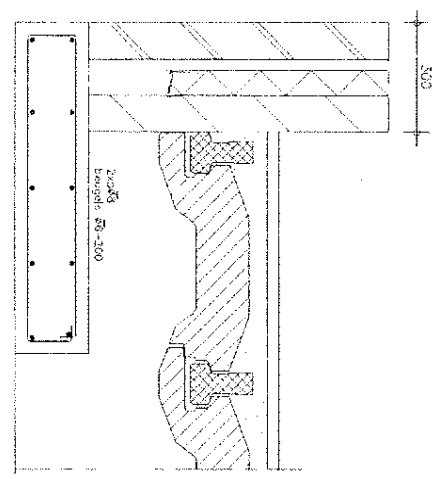
Begane grond vloer



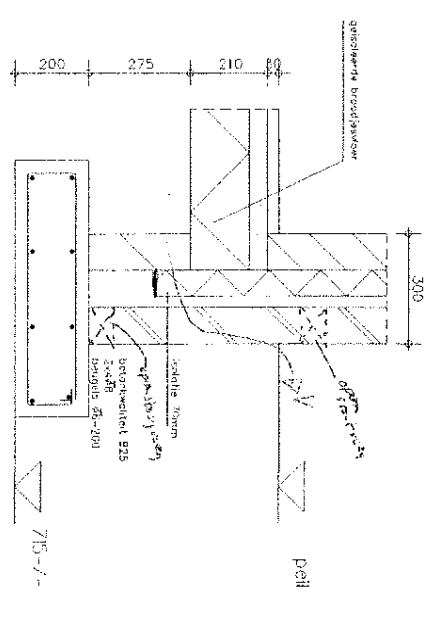
Kapplan



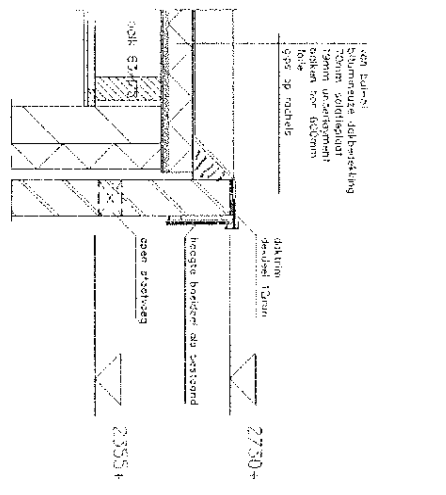
Afslacht



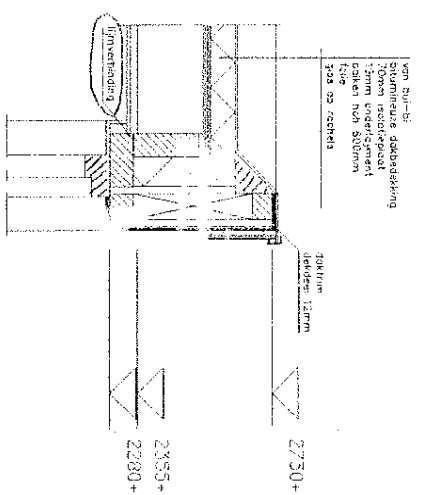
Detail 1



Detail 2

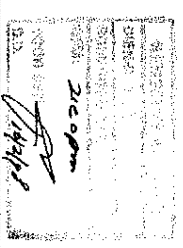


Detail 3

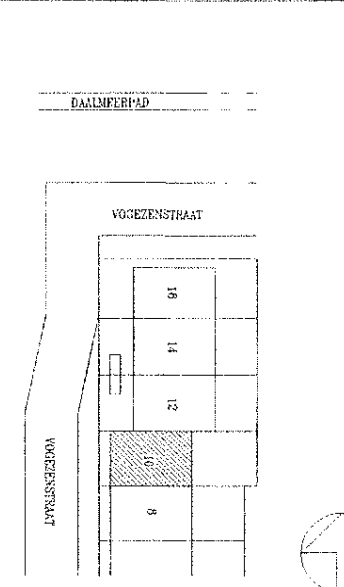


Detail 4

Gewestaten als bestaand
Geïsoleerde beglazing als bestaand
70 mm isolatie in spouw



Situatie



21/6-07
Aanbouw Vogeezenstraat 10 te Alkmaar

P. Ape loorn

ontwerper	P. Ape loorn	architect	PCA
schaal	1:100	telefoon	841x594
datum	03-01-92	ontwerp	

opmerking: gvw nr 13-02-98 van gemeenschap dhr. C. Amo

